



www.starsealfl.com

STAR-SEAL
OF FLORIDA INC

Material/Machinery & Equipment Catalog



*Your Reputation
is Our Priority*



**When Quality Counts - Use America's Most
Trusted Sealcoatings & Pavement
Maintenance Materials & Machinery.**



1-800-432-8402
Local Telephone 954-484-8402





STAR-SEAL

OF FLORIDA INC

**Manufacturing South Florida's Most Trusted Sealcoatings
and Providing Pavement Protection Products, Striping
Paints, Additives, Primers and Equipment
for More Than 35 Years!**

We Manufacture only the Highest Quality Asphalt Sealer



Our Original Commitment of

"Nothing But The Best"

Remains as Strong as Ever!

We service and support the equipment that we sell and understand that YOU, our customer, must get the highest value for your dollar. We, the manufacturer and supplier, stand ready to prove our high quality products will give you the value you deserve!

With our long-term raw material supplier relationships and assistance from only the best equipment manufacturers and parts vendors, we will always be your high value, low cost provider -

Never at the Expense of Quality!

**We Are Forever Grateful That Our Customers
Appreciate Our Endeavor. Thank-You For Your Time,
Your Trust & Your Considerations!!**

Proud Member Of:



TABLE OF CONTENTS

Page 1.....	STAR-SEAL Asphalt Pavement Sealer
Page 2.....	STAR-SEAL SUPREME Sealer
Page 3.....	Mix Design & Coverage Charts
Page 4.....	Sealcoating Additives
Page 5.....	STAR Spectrum & STAR Macro-Deck
Page 6.....	Prep & Repair Materials
Page 7.....	Sealcoating Brushes & Brooms
Page 8.....	Sealcoating Tools & Supplies
Page 9.....	Job Site Safety Supplies
Page 10.....	Sealcoat Spray Rig Parts
Page 11.....	Pavement Marking Supplies
Page 12.....	Pavement Marking Stencils
Page 13.....	Pavement Marking Materials
Page 14.....	Traffic Paint Coverage Rates
Page 15.....	Parking-Lot Signs
Page 16.....	Parking-Lot Sign Posts
Page 17.....	ADA Detectable Warning Mats
Page 18.....	Parking-Lot Supplies
Page 19-20.....	Graco LineLazer Equipment
Page 21.....	Graco ThermoLaser
Page 22.....	Graco GrindLaser
Page 23.....	Paint Striper Parts
Page 24.....	Blowers & Saws

Please visit our web site:

www.starsealfl.com

Please Note: The equipment designs, materials and machinery in this booklet are being provided based on known product availability at the time of publishing. Product offerings are subject to change without notice. Furthermore, guidelines provided are meant to assist in your general knowledge and understanding of best application and maintenance practices in the sealcoating and maintenance of asphalt pavements. The information contained herein is offered in good faith, but without guarantee, as conditions and methods of application are beyond any of our control. You should ALWAYS consult and adhere to your local /municipal/state approved engineering plans and codes!

STAR-SEAL®

REFINED TAR SEALER

Why Sealcoating Asphalt is Important!

Sealcoating is Important for several reasons, but the most Important is that it Greatly Extends the Life of YOUR Asphalt Pavement!



Our primary purpose is to PROTECT your asphalt. Star-Seal® asphalt pavement sealer resists gas, oils, salt and chemical penetrations; prevents the seepage of moisture from rain; stops oxidation from actinic rays in sunlight.

Drying to a dark, charcoal black color, Star-Seal® not only beautifies and keeps pavements looking like new, but it enhances your business image and property values as well!



How well does Star-Seal® perform? ...The cured films of sealcoatings frequently encounter rain, snow and sleet. It is extremely important that these films retain their performance properties under such conditions and not be prematurely eroded by traffic. The scrub resistance test has consistently proven Star-Seal to have excellent durability under water.

This test simulates the expected performance of a sealcoating over a period of time. The sealer samples are cast in 30 mils wet film thickness on a white mylar panel & allowed to cure for 7 days. After the cure, the samples are submerged in water containing silica sand & scrubbed with a brass bristled brush.



STAR-SEAL SUPREME®

PREMIUM REFINED TAR SEALER

**YOUR FIRST CHOICE IN PAVEMENT SEALER
WHEN QUALITY AND PERFORMANCE
IS WHAT YOU DEMAND!**



Outstanding Performance & Appearance Year After Year.

- **Star-Seal Supreme®** is a Premium Grade Asphalt Pavement Sealer for those discriminating jobs that demand your best quality.
- **Star-Seal Supreme®** utilizes a proprietary technology to achieve toughness & flexibility. Toughness and flexibility will reduce wear from traffic & last longer on the pavement surface than any other sealer on the market today.
- **Star-Seal Supreme®** achieves unprecedented water resistance by utilizing a chemistry of specialized clays and surfactant chemicals that repel water.
- **Star-Seal Supreme®** has engineered performance that Hot-Blends proprietary polymers during manufacturing and is unmatched by other “premium”, competitive sealers, which are generally made by post-adding a latex rubber to the regular sealer.
- **Star-Seal Supreme®** is manufactured as Ready-To-Use. No additional additives or water are necessary, however, sand should be added to your desired specifications.

Star-Seal® and **Star-Seal Supreme®** exceed any Federal Specification by delivering 50% or higher solids content. The solids content directly affects the performance results of protective coatings on asphalt pavements because of the resulting film thickness.

PROPERTIES & CONSTANTS	TEST METHOD	SPECIFIED LIMITS	STAR-SEAL®	STAR-SEAL SUPREME®	STATUS
Solids, % by weight	ASTM D2939-08	Min. 47-53%	49-50% (+/-) 1	50% Min.	Passes
Ash Content (%)	ASTM D2939-10	30-40%	37-38% (+/-) 1	37-38% (+/-) 1	Passes
Density @ 25° C	ASTM D2939-07	Min. 1.15	1.17	1.17	Passes
Solubility of Non-Volatiles in CS ₂ (%)	ASTM D2939-24	Min. 20%	30-32%	29-30%	Passes
Drying Time, Hrs.	ASTM D2939-13	Max. 8 Hrs.	3-4 Hrs.	Approx. 6 Hrs.	Passes
Adhesion & Resistance to Kerosene/Water	ASTM D2939-15/25	No blistering, loss of adhesion/re-emulsification	NONE	NONE	Passes

STAR-SEAL®

REFINED TAR SEALER

MIX DESIGNS

Star-Seal®

Requires Water, & Sand. Additives are Optional.

STAR-SEAL®	Gallons of Water	Macro-Flex®	Pounds of Sand	Total Mix in Gal.	2-Coat Coverage
500	200	10	1500	779	25,000
450	180	9	1350	701	22,500
400	160	8	1200	623	20,000
350	140	7	1050	546	17,500
300	120	6	900	468	15,000
250	100	5	750	390	12,500
200	80	4	600	312	10,000
150	60	3	450	234	7,500
100	40	2	300	156	5,000
50	20	1	150	78	2,500
10	4	0.2	30	16	500

Star-Seal Supreme®

Requires Sand Only. *Additives and Water are Not Necessary!*

STAR-SEAL SUPREME®	Pounds of Sand	Total Mix in Gals.	2-Coat Coverage
600	1500	669	25,000
550	1375	614	22,917
500	1250	558	20,833
450	1125	502	18,750
400	1000	446	16,667
350	875	390	14,583
300	750	335	12,500
250	625	279	10,417
200	500	223	8,333
150	375	167	6,250
100	250	112	4,167
50	125	56	2,083
10	25	11	417

The following Charts are Suggested Guidelines for Mix Design & Coverage Rates. Please Note - Coverage Rates Vary based on Condition of Asphalt. The More Oxidized (Bleach-Out White), patching, cracking, potholes, - the more material will be needed. Coverage Rate is based on Square Footage.

High Performance Additives

Boost the Performance of Your Mix Design!

MACRO-FLEX



Polymeric Latex Additive for All Types of Seal Coatings. Meets FAA P-627 & 628.

- Faster Drying Times
- Longer Lasting Performance
- Increased Toughness & Flexibility
- Promotes Uniform Charcoal Black Color
- Increases Capacity to Suspend Higher Loads of Sand in Sealer Mix Design
- Improved Gasoline, Oil & Chemical Resistance

5 Gallon Pail

MACROFAST

Rapid Drying Additive for Seal Coatings That Does Not Alter Mix design.

- Speeds Up Drying of Seal Coatings Reducing Labor Costs
- Does Not Affect Viscosity
- Hardens the Seal Coating & Reduces Power Steering Marks, Scuffing & Tearing
- Makes Sealcoatings Dry More Uniformly and Enhances Black Color of Cured Sealer
- Improves tensile Strength, Flexibility & Adhesion



5 Gallon Pail

STAR® manufactures some of the Best Performing Sealer Additives on the market today. Ask us about any of these industry leading, performance boosting products and how they can help you be the BEST Contractor you can be!

STAR SPECTRUM®

ACRYLIC BASED VIBRANTLY COLORED COATINGS

For Protection and Beautification of Asphalt and Concrete

Magnificent Colors!

STAR SPECTRUM® cures to a vibrant color that will resist fading and weathering.

SPECTRUM BRIGHTS



LILY WHITE



LEMON YELLOW



BIKE LANE GREEN



OCEAN BLUE



CONCORD PURPLE



PEPPERMINT PINK



HOT ROD RED

SPECTRUM STANDARDS



SKY BLUE



SEA FOAM GREEN



FAIRWAY GREEN



SALMON ORANGE



MAGENTA



COOL GRAY



STANDARD BLACK

SPECTRUM NATURALS



SAGE GREEN



BRICK RED



DARK GRAY



SAHARA TAN



LIGHT BROWN



SUEDE BROWN



CUSTOM COLOR MIX

- 100% acrylic latex polymer based coating
- Belongs to a bold new generation of pavement maintenance products
- Handles like traditional sealcoating, no special tools or equipment needed
- Excellent Durability – has been proven as a viable alternative to many traditional pavement coating products

5 Gallon Pail or Bulk in Totes

MACRO-DECK

PROTECTION FOR: Concrete Bridge Decks, Control Barriers, Superstructures & Driveways

- Creates a rubberized matrix inside the physical structure of the concrete
- Improves the tensile & flexural strength of concrete.

5 Gallon Pail



PREP & REPAIR

Primers, Patch and Tack Coat

S.O.S. SEALER



Latex Based Primer That Adheres To, & Seals, Oil & Grease Spots On Asphalt Pavements

- Polymeric matrix creates a tough film that will bond aggressively to the contaminated area
- Allows all types of sealers to adhere properly to the freshly primed area & prevents bleed through
- Dries in about 20 minutes
- Concentrated – Add 2 parts Water to 1 Part SOS

5 Gallon Pail

ALL WEATHER BLACKTOP PATCH

A High Performance Patching Material for the Repair of Potholes in Driveways & Parking Lots.

- Use in wet /dry conditions, in any temperature
- Environmentally preferable - VOC compliant
- Easy to use - does not require heating
- Fast and permanent
- Repairs can be opened to traffic immediately
- Minimum 2-year shelf life

60 Lb. Bag



SS-1H ASPHALT TACK COAT



Asphalt Binder is an Anionic Asphalt Emulsion Designed for Use as a Tack Coat for Patching & Paving

- Slow setting emulsion, used for many applications, including tack and prime
- Stronger bond between layers increases pavement structural strength and fatigue life

**5 Gallon Pail or
Bulk (30 Gal Min.)**

Brushes & Brooms, Etc.

For Sealcoat Application

3' Complete Brush,
Bracket & Handle

3' Refill

3' Bracket



18" Complete Brush,
Bracket & Handle

18" Refill

18" Bracket

6' Handle



36" Complete Heavy
Duty Squeegee

36" Complete Asphalt Lute
w/7' Handle

42" Complete Asphalt Lute
w/9' Handle

Wire Broom Includes 6'
Tapered Handle

Orange Street Broom Includes
6' Tapered Handle



Sealcoating Tools/Supplies

Must Have Supplies On The Job Site



Keson Heavy Duty Measuring Wheel With Kickstand & Curved Telescoping Handle

**Flagging Ribbon -
12 Rolls Per Box or
String Roll**

**Sand 50# Bag-
Single Bag or
Pallet of 64 Bags**

**Wooden Stakes
50 Piece Bundle**

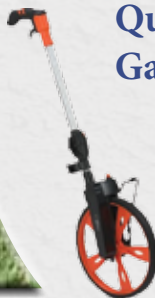
Masking Tape 3"

Torch Kit

Edging/Cut-In Brush

Asphalt Tamper 10"

**Sollvall Sealant Remover -
Quart or
Gallon**



Job Site Safety Products

The Items You Need To Keep
Your Crew SAFE!



Gloves-

Blue Gloves

Latex Gloves (Box)

Leather Gloves

Tyvek Spray Suits



Face Protection Spray Sock



Safety Vest

Safety Glasses



Caution Tape 300' Roll



Scrubs-In-A-Bucket 72 Count
Hand Cleaner Towels. No Soap
Or Water Needed!!

Sealcoat Spray Rig Parts

High Quality Parts & Equipment

The parts you need to keep you & your crew working.



**Graco Diaphragm Pump
1590 (P/N DB3GGG)**

Hose Reel



**Hose w/Swivel Fitting
3/4" x 100'**

**Hayward 2" Strainer
w/Basket**



Replacement Filter Basket



HS Spray Tip



Bushing/Reducer (to 1/4")



3/4" x 3/4" Elbow



Brass Ball Valve 3/4"



Complete Spray Wand



Pavement Marking Supplies

The Supplies You Need Are In Stock!

Keson - G130 Giant Chalkline, 130ft.
Heavy Duty Cord, High Capacity
Reservoir & Pull Ring



Keson - Chalk; Red, White &
Blue Available
5lb.
8oz.

Keson - Crayons Red, White &
Blue Box of 12



Marking Spray Paint -
20oz. Single Can
Case of 12 Cans
Latex Spray



Marking Stick

Pistol grip and trigger to spray paint
exactly where you want it.



Paint
Strainers

Pavement Stencils

Traffic Control Markings

Pavement Marking Stencils are Manufactured according to
FAA Specification AC150-5340-1H

1/10" Polished Medical Grade Polyethylene Plastic Stencil
Fast Velcro – Attachments on All Kits

Handicap Stencil

39¹/₂"

5'



Arrow Kit

Large 3 Pcs.

Medium 3 Pcs.

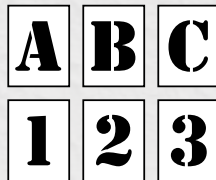


Alphabet Kit (39 Pieces)

4"

18"

24"



Number Kit (18 Pieces)

4"

18"

24"

GUEST

VISITOR

RESIDENT

RESERVED

HANDICAP

CUSTOMER

COMPACT

4" Curb Wording

18" No Parking

18" Fire Lane

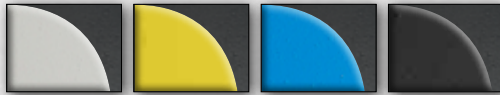
NO PARKING

FIRE LANE

Special Sizes/Wording/Styles
Please Call for Availability!

Pavement Marking Materials

Acrylic Quick Dry Traffic Paints



Acrylic Waterborne Quick Dry Traffic Paints
With 50% Solids - Polymer Emulsion Binder & Liquid Drier.
Excellent Performance On Highways, Parking Lots & Airports.
Spec. TTP-1952-E FDOT-971

White, Yellow & Black - 5 Gallon
Blue - 5 Gallon

Pre-Formed Thermoplastic Hot-Tape



Hot-Tape, Heat Fused, Preformed Thermoplastic
Pavement (Glass Beaded) Marking.

Designed For Easy Application Has The Durability Of Hot Applied Thermo!

White/Yellow 12" x 3' x 10" Strips
White/Yellow 6" x 3' x 20" Strips
Arrows, Handicap Symbols, Wordage

Thermoplastic & Glass Beads



Florida State 2006 DOT Spec Thermoplastic.
A Molten Material Heated To 425°F Before It Is Applied To The
Pavement. Type I Glass Beads Are Applied On Top.

White/Yellow
Glass Beads 50lb (Type I)

Please Call For Pallet Availability On Thermoplastic & Glass Beads!

Traffic Paint Coverage Rates



Parking Lot Striping – Paint Quantity Needed

For **Parking Lot Stripes** 4” wide and 18’ long; That is equal to 6.00 sq. ft. total. So that means approximately 16 stripes can be painted with 1 gallon of paint.

NUMBER OF STRIPES	GALLONS USED
1	.06
5	.30
10	.60
15	.90
20	1.20

Highway Striping – Paint Quantity Needed

For a **Solid Traffic Stripe**; 4” wide and 5280’ long (1 mile) it will require approx. 16.5 gallons of paint.

For a **Skip Traffic Stripe**; 4” wide and traveling 5280’ (1 mile) it will require approx. 4.125 gallons of paint, assuming that each stripe is 10’ long & each paint stripe is separated by an unpainted space 30’ in length.

MILES	GALLONS - SOLID STRIPE	GALLONS - SKIP STRIPE
.10	1.650	0.413
.50	8.250	2.064
1.00	16.500	4.125
5.00	82.500	20.625
10.00	165.000	41.350

Glass Bead Coverage Rates

To ensure optimum retro-reflective performance and durability, apply standard Highway Glass Beads at the rate of;

6 to 10 pounds per gallon of Traffic Paint.

Approximately 5 bags of beads per ton of thermoplastic.



Please Note: Coverage Rates are Approximate - Please check with your Local municipality for application rates of glass beads on traffic marking paints & thermoplastics!

Parking Lot Signs

Traffic Control Markings

All Signs Are .080 Gauge
H-5052 Federal Approved Alloy

30" STOP/Do Not Enter

Hi-Prismatic
Diamond Grade



12"x 18" Handicap Permit or Fine

12"x 6" Handicap \$250 Fine/
Van Accessible



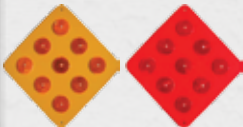
30" Right/Left Turn Only

18"x 24" No Parking Fire Lane By
Order Of Police/Fire Dept.



12"x 18" No Parking Any Time
or Fire Lane

12"x 36" One Way



9 Button Red or Yellow

Parking Lot Sign Posts

Traffic Control Markings

Holes are 3/8 in. diameter spaced 1 inch apart on center for easy sign mounting.

Green 2# U-Channel

8'
10'
12'



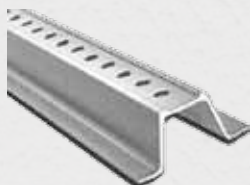
Square Post

10'
12'
3' Sleeve



Galvanized 3# U-Channel

10'
12'
30"



Hardware Set:

2-Bolts, 2-Nuts
2-Lock Washers
2-Plastic Washers

Installs 1 sign to post



ADA Warning Mat

Detectable Warning Tiles provide a physical warning for visually impaired pedestrians.

DWT Tough ADA Warning EZ Mat is an injection-molded polymer composite mat that is both lightweight and economical and is ideal for use in any ADAAG required applications. DWT color is homogenous throughout the mat.

QUICK AND EASY Installation is quick and easy. Each mat can be installed in under 15 minutes, after cleaning the installation area.

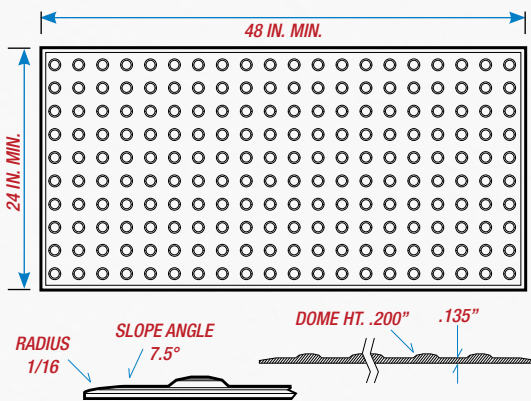
PEEL-N-STICK ADHESIVE Non-skid, waterproof walking surface that conforms to the contours and variations of concrete sidewalks. This assembly is secured by a special pressure sensitive adhesive.

INDESTRUCTIBLE Lightweight, UV-stabilized and impact-modified polymer composite material will not crack, chip, break, crush or wear down, and provides years of use without discoloration or fading. DWT is manufactured using a specially formulated UV protection and cold weather package that provides years of use without discoloration or fading..

Yellow ADA MAT 2' x 4' (24" x 48")



Detail



Parking Lot Supplies

Everything You Need To Keep Cars Under Control
& People Safe Around Traffic!

Delineators

60" Bollard Covers

Call for Availability on Special
Sizes/Colors



Reflective Pavement Markers

Yellow

Box of 100
or Sold Individually

Blue/Red/Green/White/Red-Clear

Box of 100
or Sold Individually



Bundy Pads - Torch application for
Adhesion of RPM's or Delineators
to Asphalt & Concrete.

5x5" (RPM) Each
8x8" (Delineators)



Rubber Speed Bump w/End
Caps & Hardware

Rubber Car Stop With White,
Yellow or Blue Stripe Includes
Hardware

Concrete Car Stops
Extra Carpins Are Available



72" x 6" x 2.25"



Graco LineLasers

South Florida's Most Trusted Graco Certified GoBlue Dealer
We Sell Them, Provide Parts For Them & We Service Them!

LineLazer V 5900 *Airless Line Striper*

The LineLazer V 5900 is designed for 2-gun professional stripers, delivering the most precise & consistent lines in the industry.



Graco LineLazer Model V 5900
2nd Gun Free (PN 17H455)

PROVEN **QUALITY**

Each LineLazer stripers boasts Graco quality and dependability that you can count on. For more than 25 years striping contractors have turned to Graco.

Graco LineDriver HD *Ride-On System for Line Striping*

Why walk when you can ride? Connect LineDriver to your LineLazer stripers & double your striping production. LineDrivers are engineered to meet your needs, changing the way you work while finishing jobs in half the time.



Graco LineDriver HD
(PN 262005)



Graco LineLasers

South Florida's Most Trusted Graco Certified GoBlue Dealer
We Sell Them, Provide Parts For Them & We Service Them!



LineLazer V 3900

Airless Line Striper

The LineLazer V 3900 is the preferred choice of pros for a wide variety of pavement marking applications.

Graco LineLazer Model V 3900 2nd Gun Free

(PN 17H450)

MAXIMUM PERFORMANCE

Each LineLazer System is engineered to deliver maximum performance for completing jobs quickly and efficiently.



LineLazer 3400 One-Gun

Airless Line Striper

The preferred choice of parking lot & seal coating contractors looking for professional performance in a one-gun machine.



Model 3400 One-Gun

(PN 25M224)

Graco ThermoLazer

South Florida's Most Trusted Graco Certified GoBlue Dealer
We Sell Them, Provide Parts For Them & We Service Them!

ThermoLazer ProMelt Thermoplastic Handliner

A user-friendly and innovative thermoplastic striper. EasyGlide Wheel Mount System makes this unit as easy to maneuver as a LineLazer.



Graco ThermoLazer ProMelt
Includes 4" SmartDie II (PN 24H623)

INDUSTRY LEADING **WARRANTY**

Every Graco striping system is backed by our full warranty coverage & more than 85 years of proven commitment to the professional contractor.

Graco ThermoLazer Smart Die II System

Hardened steel - built to last!

Built using heavy-duty steel, and with no springs, this die can remain on the unit, be cleaned on the ThermoLazer. The exclusive, 'spring-less' design allows the die to "float" on the striping surface.



6" SmartDie II
or
12" SmartDie II



Graco GrindLazer

South Florida's Most Trusted Graco Certified GoBlue Dealer
We Sell Them, Provide Parts For Them & We Service Them!



GrindLazer 630 *Highest Performance*

Ideal for removing traffic paint, thermoplastic, epoxy coatings, & smoothing uneven surfaces. Extra power for inlay and grooving.

Graco GrindLazer 630 (PN 571265)

GrindLazer 630 w/LineDriver HD System

UNMATCHED **PRODUCTIVITY**

Superior design, innovative technology means you'll be getting the highest productivity—only from Graco. We stand by our products and don't settle for less than the best.



GrindLazer 390 *Superior Grinding Solution*

Ideal for removing traffic paint, thermoplastic, epoxy coatings & smoothing uneven pavement surfaces.



GrindLazer 390 with 10" 6 Point Miller Carbide Cutter (PN 571003)

Striper Parts

High Quality Graco Replacement Parts

The parts you need to keep you & your crew working.



LL5 Series Spray Tips

Size: 315, 317, 319, 423, 625



Tip Guards

(Every 5th Tip Change - Replace Your Guard!)

LineLazer Tip Selection Guide:

- LL5315 4-6 in. Most traffic paints - light film build
- LL5317 4-6 in. Most traffic paints - medium film build
- LL5319 4-6 in. Most traffic paints - medium film build
- LL5423 4-8 in. All paints and high solids traffic paints - heavy film build
- LL5625 8-12 in. All traffic paints - medium film build

EXAMPLE:
#5 = 1/2 Fan Width (2x5=10")
→ **517** ←
#17 Orifice Diameter (0.017")

How to Maximize Line Quality and Reduce Tip Wear:

- Select a larger tip orifice and run the sprayer at a reduced operating pressure.
- Running larger tip sizes (example: use tip LL5321 @ 2000 psi instead of LL5317 @ 3300 psi) will significantly increase tip life and reduce tip plugging. It will also produce a more uniform film build across the line.

Graco Inlet Strainers



Graco 60 Mesh Filters



Graco Throat Seal Oil

Pint or
Quart



Graco Spray Gun w/tip & Guard



Graco Blue Max 50' Hose



Equipment

We Have The High Quality Equipment That Works For You!
We Sell Them, Provide Parts For Them & We Service Them!

Billy Goat Force Blowers

Billy Goat's full line of Force™ blowers are up to 30% lighter and deliver up to 7x the power of a backpack. Smooth composite versus steel housing is quieter and eliminates air voids for powerful air flow.



6 hp Vanguard



10 hp Vanguard



13 hp Honda



Norton Street Saw

The Norton C1318P features shock-absorbing handle bars, water tank with 1.5 gallons of water over the cut, a simple belt tensioning system and Honda 13HP engine.

Asphalt Concrete Blades
Each

Box of 10



Bomag Plate Compactor

Compact & versatile units are indispensable for day-to-day use on the most frequent applications in repair and maintenance works, earthworks, asphalt and paving. Developed for contractors who demand BOMAG quality!.

**Bomag BVP18-45 With Wheel Kit
& Water Tank**



Manufacturing South Florida's Most Trusted Sealcoatings and Providing Pavement Protection Products, Striping Paints, Additives, Primers and Equipment for More Than 30 Years!



Serving all of South Florida from our Ft. Lauderdale Plant.

From I-95 exit at Cypress Creek Rd. and head West to 31st Ave. (Lyons Rd.). Turn left (South) on 31st Ave. and left again onto Prospect Rd. The first street on the left past the airport is N.W. 55th Court. Star-Seal of Florida is 1/4 mile down on the right.

From the Turnpike exit at Commercial Blvd. and head East to 31st Ave. Turn left onto 31st Ave. and then right onto Prospect Rd. The first street on the left past the airport is N.W. 55th Court. Star-Seal of Florida is 1/4 mile down on the right.

One Stop Shopping Means You Get Back On-Site Faster!

We have the professional tools you need - when you need them.



Highest Quality Equipment Gets The Job Done - Every Time!

We Sell, Service and Provide Parts on all the Equipment We Sell!!!



www.starsealfl.com

1-800-432-8402

Serving All of South Florida!

**2740 NW 55th Court,
Ft. Lauderdale, FL 33309
Telephone: 954-484-8402**